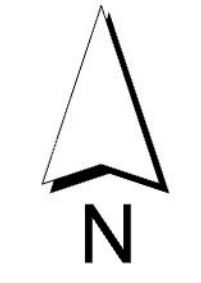


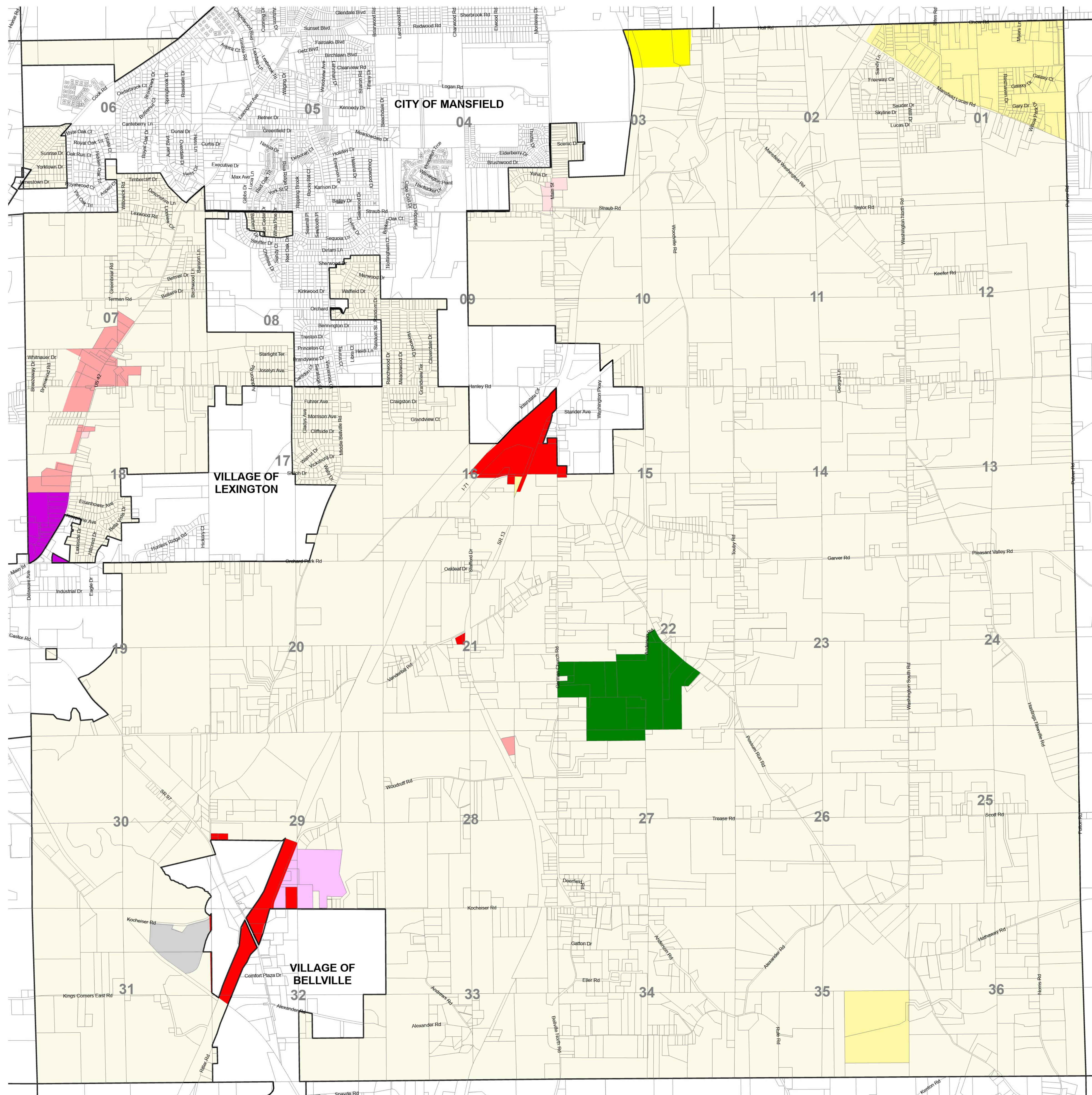
# ZONING DISTRICT MAP

## TOWNSHIP OF WASHINGTON

Richland County, Ohio



SCALE 1" = 0.25 MILE



### LEGEND

- |   |                                       |
|---|---------------------------------------|
| R-1 RESIDENTIAL DISTRICT                  | B-1 NEIGHBORHOOD BUSINESS DISTRICT    |
| R-2 RESIDENTIAL DISTRICT                  | B-2 GENERAL BUSINESS DISTRICT         |
| M-D RESIDENTIAL DISTRICT                  | B-3 HIGHWAY SERVICE BUSINESS DISTRICT |
| MH MANUFACTURED HOME DISTRICT             | I-1 LIGHT INDUSTRIAL DISTRICT         |
| RD RECREATIONAL DISTRICT                  | I-2 HEAVY INDUSTRIAL DISTRICT         |
| PR PLANNED RESIDENTIAL DISTRICT           |                                       |
| PC PLANNED COMMERCIAL AND OFFICE DISTRICT |                                       |

On the below dates, by official action of the Township Trustees, the following changes were made:

- 10-06-2003
- 11-28-2006
- 12-28-2014
- 02-28-2015
- 07-21-2016
- 11-01-2018
- 12-10-2020
- 10-26-2023
- 09-19-2024

- Updated Corporation Boundary (Mansfield Annexation 01/13/2004)
- Updated Corporation Boundary (Mansfield Annexations 06/20/2003, 02/21/2006, 03/07/2008)
- Updated Corporation Boundary (Mansfield Annexation 02/04/2014)
- Updated Corporation Boundary (Lexington Annexation 06/24/2015)
- Updated Corporation Boundary (Lexington Annexation 11/20/16)
- Updated Corporation Boundary (Mansfield Annexation 02/06/2023)

This is to certify that this is the official Zoning Districts Map referred to in Section 300.1 of the Zoning Resolution of the Township of Washington, County of Richland, Ohio, Adopted on April 15, 1974, and otherwise amended up to this 16th day of May, 2002.

#### WASHINGTON TOWNSHIP TRUSTEES

- /s/ Albert O'Neil
- /s/ Tim West
- /s/ Kay Lettenberger

#### ATTEST:

- /s/ William Powell
- William Powell
- Township Clerk