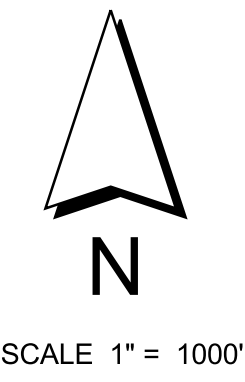
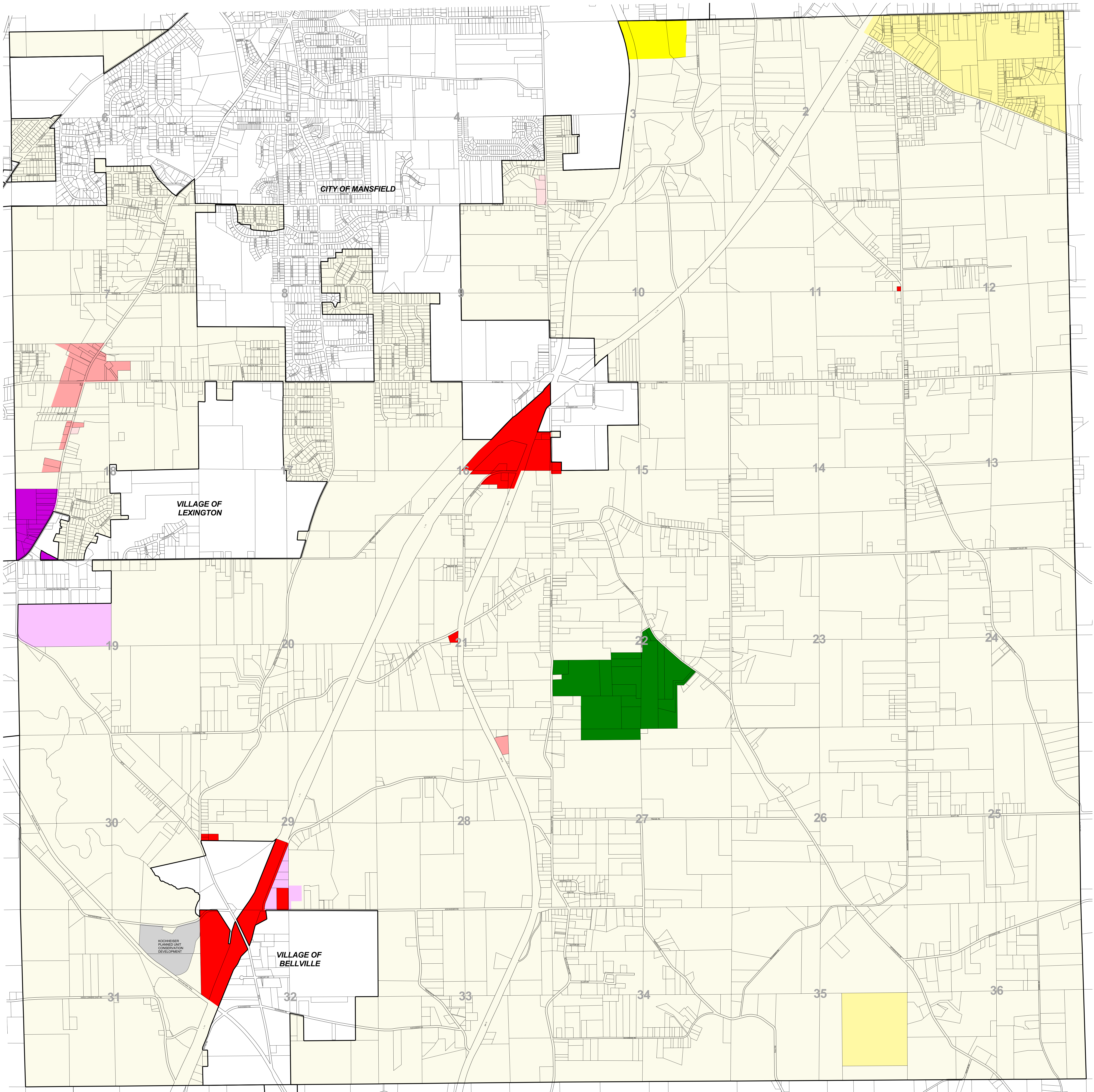


# ZONING DISTRICT MAP TOWNSHIP OF WASHINGTON

Richland County, Ohio



SCALE 1" = 1000'



## LEGEND

R-1 RESIDENTIAL DISTRICT	B-1 NEIGHBORHOOD BUSINESS DISTRICT
R-2 RESIDENTIAL DISTRICT	B-2 GENERAL BUSINESS DISTRICT
M-D DISTRICT	B-3 HIGHWAY SERVICE BUSINESS DISTRICT
MH MANUFACTURED/MOBILE HOME DISTRICT	I-1 LIGHT INDUSTRIAL DISTRICT
RD RECREATION DISTRICT	I-2 HEAVY INDUSTRIAL DISTRICT
PR PLANNED RESIDENTIAL DISTRICT	
PC PLANNED COMMERCIAL AND OFFICE DISTRICT	

On the below date(s), by official action of the Township Trustees, the following changes were made:  
10-06-03  
11-28-05

This is to certify that this is the official Zoning Districts Map referred to in Section 300.1 of the Zoning Resolution of the Township of Washington, County of Richland, Ohio, Adopted on April 15, 1974, and otherwise amended up to this 15th day of May, 2002.

### WASHINGTON TOWNSHIP TRUSTEES

/s/ Albert O'Neil  
Albert O'Neil  
 /s/ Tim Wert  
Tim Wert  
 /s/ Kay Lellenberger  
Kay Lellenberger

### ATTEST:

/s/ William Powell  
William Powell  
Township Clerk

Updated Corporation Boundary (Mansfield Annexation 11/3/04)  
Updated Corporation Boundary (Mansfield Annexations 6/3/03, 2/21/06, 3/7/06)